

2014 Fall SPED Updates

October 20th

Jessica Moore

jmoore@esu9.org

Michelle Sutter

msutter@esu9.org

Below Age Five Information

- Rule 11 is in the process of being revised
- Rule 52 is now in effect
 - All children B-3 will have a Service Coordinator
 - New EDN Consent for Evaluation Form

<http://goo.gl/ZneRSM> --Effective July 15, 2014

Part C Monitoring

- ESU 9 PRT will be monitored in 2014-15
 - Desk Review
- Items monitored
 - Service Coordinator files and not school district files
 - PRT Policies & Procedures
 - PRT Grant
 - PRT Meeting Minutes
 - CONNECT Reports

Program Statements on IEP

Describe the program vs the name of the program. (From Karen Hasse - ESU SPED Directors June 2014 meeting)

IEP Meeting Attendance

Karen Haase Memo

- **Teacher leaves IEP meeting early**
- Notify parents *before the meeting* and obtain *written consent*
- If it occurs at the meeting, obtain *written consent* from the parents or reconvene the meeting

Rule 51-PART B (3 to 21)

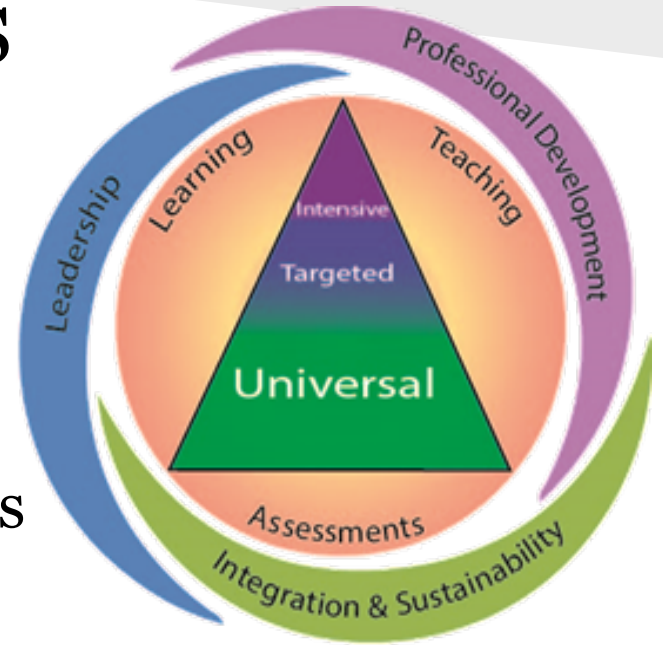
Changes

- Removal of Birth to 3-Early Intervention
- Graduation - 004.03 and 004.04
 - At the request of parents-Certificate of Attendance
 - Participation in Graduation Ceremony
 - Complete IEP requirements
 - Receive Diploma once IEP requirements are met

<http://goo.gl/npqNjS> - Effective July 15, 2014

Changes with RtI

- RtI is moving towards MTSS
- **Multi-Tiered System of Support**
 - Evidence Based practices to support **academic** and **non-academic** needs for all students



State of the State

Link to States Determination

<http://goo.gl/EH8HG9>

- SPED students **MUST** be included in NAEP testing
- Lack of SPED students participating in NAEP negatively affects the state's determination

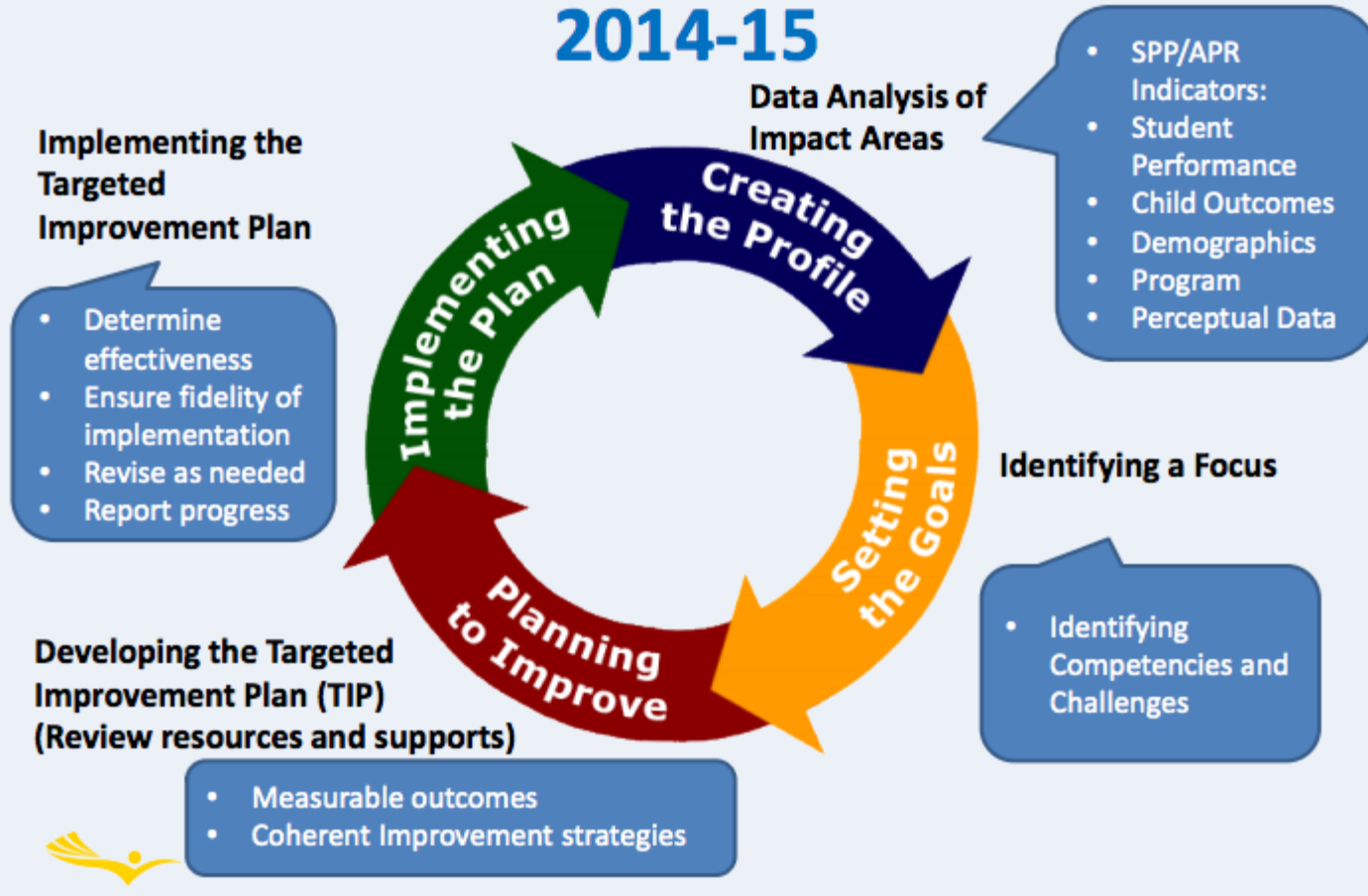
ILCD Process

Results Driven
Accountability
(RDA)

Impact Areas:

1. Academic Achievement
2. Communication
3. Relationships & Transitions

ILCD/Impact Areas 2014-15



ILCD PROCESS—Results Driven Accountability (RDA)

Three Impact Areas: Academic Achievement, Communication and Relationships & Transitions

- All districts need to have a *Targeted Improvement Plan* by **August 1st, 2015.**
 - *(Annual Self-Assessment and Multi-Year Growth Plan)*
- **November 13th** (9:00 to 11:30) @ CCC-Dawson Building-View NDE Webinars, Discuss Data Sources and Q & A
 - Register online @ ESU 9 website: <http://goo.gl/b6MDe7>

RDA - ILCD Process

Three Impact Areas: Academic Achievement, Communication and Relationships & Transitions

- Three Data Work Days will be held to complete data analysis and develop TIP - **February 9th, 10th, & 11th**
 - February 9th & 11th @ ESU 9
 - February 10th @ Aurora
 - **Pick one to attend!!!**

Register online @ ESU 9 website: <http://goo.gl/b6MDeZ>
- Regional Meetings to further develop the TIP if needed

SRS Updates

Wade will be available at booth from 10:00 to 2:00 for any Q & A